



No.12B, 2nd Floors, Anbu Nagar, 3rd Street,
Alwarthirunagar, Chennai-600 087.
Ph:9841226220 /9444901825/9094853994

[Web:www.geoenggservices.com](http://www.geoenggservices.com)

[Email:info@geoenggservices.com](mailto:info@geoenggservices.com)/geoengineeringconsultantindia@gmail.com



COMPANY

Delighted and with great pride we introduce **GEO ENGINEERING CONSULTANTS & SERVICES**, an integrated engineering services initiative by a team of enthusiastic well experienced geotechnical and civil engineers. We hope to establish a firm and prolonged relationship with our client's by fully committing ourselves and by providing excellent service that exceeds the client's expectation. We are a full-service geotechnical and civil engineering consulting company based in Chennai. Our state-of-the-art infrastructure empowers us in providing real time quality data acquisition for all civil, onshore and offshore projects.

VISION

To be a world-class centre of excellence for integrated engineering services.

MISSION

To provide quality valued services with a client-centric approach earning their trust and building a durable relationship with the client. To work together as a team focused on the success of the organization and the people with in.

QUALITY POLICY

As a quality foundation design company, GECS is committed to fully satisfy customers by providing them safe & efficient technological solutions related to Geotechnical & Geophysical Investigations, Non-Destructive Testing, Topographical and Contour Survey consulting activities. Our driving philosophy is 'Quality first'. We work towards complete satisfaction of our client by adopting good work practices and meeting their requirements through timely delivery of appropriate solutions. Further, we have our state-of-the-art laboratory facility, testing equipment, relevant software and code books (IS, BIS, IRC & ASTM, and all relevant codes) ensuring quality in all spheres of our consultancy activities.

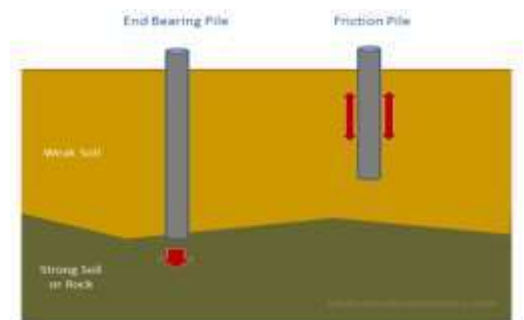
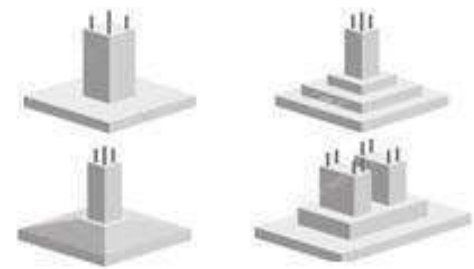
GEOTECHNICAL ENGINEERING

Structural

This vertical provides design, consultancy and data acquisition services for all kind of geotechnical applications. The working group includes geotechnical engineers, geologists and geophysicists.

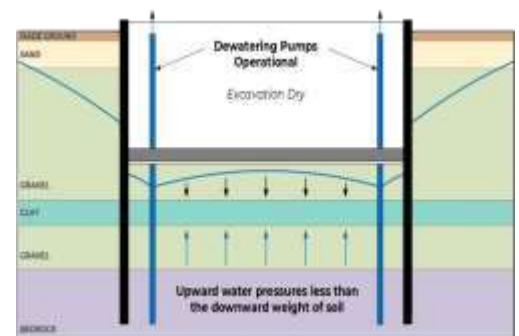
❖ Design Capabilities

- Shallow Foundations
- Deep Foundations
- Foundations in Permeable Soils
- Ground improvement
- Deep Excavations
- Soil and Rock Anchors
- Ground water lowering



❖ Consulting

- Geotechnical Review & Value Engineering
- Independent external monitoring of load tests



GEOTECHNICAL DATA ACQUISITION

A versatile geotechnical, geophysical and high technology non-destructive testing infrastructure is the back bone of the design and consulting divisions. Stringent validation process coupled with highly skilled analytics team ensures the authenticity, reliability and quality of the data.

FIELD DATA

❖ Geotechnical

- Deep boreholes with in situ SPT “N” Value
- Core drilling in rocks
- Dynamic cone penetration test
- Static cone penetration test
- Plate Load Test
- Modulus of sub grade reaction (K-Value)
- Field CBR



❖ Geophysical

- Electrical resistivity survey
- Geophysical for Ground water investigation
- Ground Water divining
- Hydrogeological Study

❖ Pile load test

- Vertical
- Pullout
- Lateral



LAB DATA

a) Soil Classification

b) Fine Grain soil

- Atterberg limit (LL/PL)
- Hydrometer Analysis
- Shrinkage limit
- Free Swell index
- Specific Gravity

c) Coarse Grain soil

- Grain Size Analysis
- Specific Gravity

d) Strength & Deformation

- Tri-Axial Test
- Direct shear Test
- One dimensional Consolidation Test

e) Chemical Analysis (Water/Soil)

- Ph Value
- Chloride Content
- Sulphate Content

f) Rock Properties

- Point Load Test
- UCC Test

g) Engineered soil properties

- Relative Density
- Maximum Dry Density (MDD)
- Optimum Moisture Content (OMC)
- California Bearing Ratio (CBR)



NON-DESTRUCTIVE TESTING

A high technology non-destructive testing infrastructure is the back bone of the design and consulting divisions. Stringent validation process coupled with highly skilled analytics team ensures the authenticity, reliability and quality of the data.

❖ Non-Destructive Testing

- Low strain pile integrity test
- High strain dynamic load test
- Ultrasonic Pulse Velocity
- Rebound Hammer
- Core cutting
- Rebar Locater
- Half Cell Potential



HYDROGEOLOGICAL DATA ACQUISITION

This vertical operates through hydrologist working in close coordination with hydrogeologist, geologist, geotechnical, data acquisition and data analytics teams of the company.

❖ Hydrogeological Survey

- Groundwater investigation using Electrical Resistivity method
- Yield Test (Pump out / in Test)
- Water Diviner
- Groundwater availability studies and management
- Groundwater Monitoring
- Rain water harvesting
- Borehole condition assessment
- Groundwater quality assessment(chemical)



❖ Hydrology Analysis

- Hydrology and Hydrographic Analysis
- Watershed Analysis (GIS)
- Flood studies and estimates



ENGINEERING SURVEY

Dedicated teams acquire engineering survey data for land and offshore project. The infrastructure of the division ranges from drone surveying to deep sea eco sounders.

❖ Land

- Mapping of land profiles and features
(Contour and Topography)
- Routing survey
 - Survey methods
 - ✓ Total station survey
 - ✓ Drone survey



CLIENT LIST

OUR PRECIOUS CUSTOMERS



Tamil Nadu Road Development Company Ltd.



OUR PRECIOUS CUSTOMERS



OUR PRECIOUS CUSTOMERS



OUR PRECIOUS CUSTOMERS



OUR PRECIOUS CUSTOMERS



OUR PRECIOUS CUSTOMERS



OUR PRECIOUS CUSTOMERS



SRI HOME INTERIORS
EXPERTS IN MODULAR KITCHEN & WARDROBES



OCEAN[®]
DELIVERING DREAMS

CIVIL CONSTRUCTION | INFRA | TURNKEY FITOUT



OUR PRECIOUS CUSTOMERS



M R SHELTERS LLP
FLAT PROMOTERS



OUR PRECIOUS CUSTOMERS



OUR PRECIOUS CUSTOMERS



PEARL GLOBAL

Exceeding Expectations...Always



OUR PRECIOUS CUSTOMERS



**CHENNAI
INSTITUTE OF TECHNOLOGY**
(Autonomous)



OUR PRECIOUS CUSTOMERS

MediVision™
EYE CARE CENTRE
MAKING THE WORLD SEE



Sanggavai's
Building Aspirations



OUR PRECIOUS CUSTOMERS



VEL HI TECH INDUSTRIES



**SRISHTI
DESIGN
STUDIO**

